

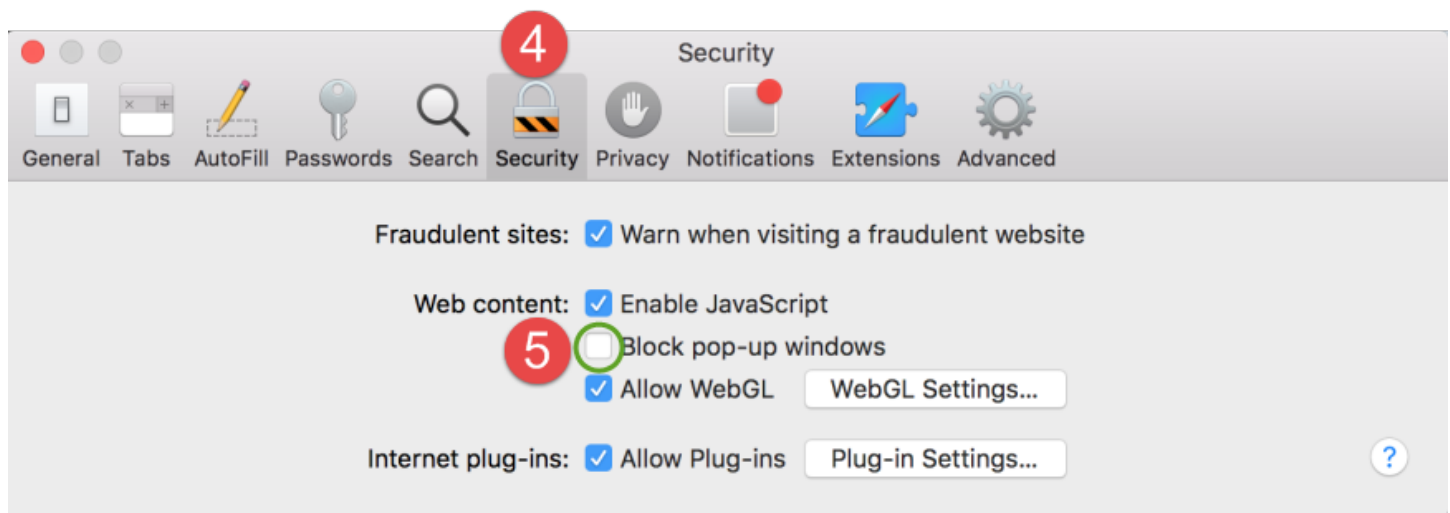
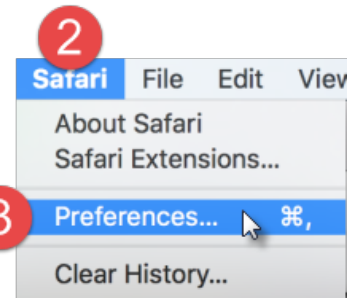
How to Optimize Safari Browser Preferences for Use with Topaz Elements

The most recent versions of Safari are compatible with Topaz Elements on a Macintosh computer. Follow these steps to optimize Safari so it will work harmoniously with Topaz Elements. Make sure you are currently on the <https://uconnprod.topazti.net/UCElements> website while making these changes to Safari.

Disable Pop-up Blocker

By default, Safari blocks all pop-up windows and tabs. It provides no warning if a popup is blocked. There are several portions of Topaz Elements which will not function if popups are blocked (e.g. Sign via Shibboleth, printing and exporting of some reports in the dashboards and in the main modules). You must disable the pop-up blocker in the Safari preferences to turn it off.

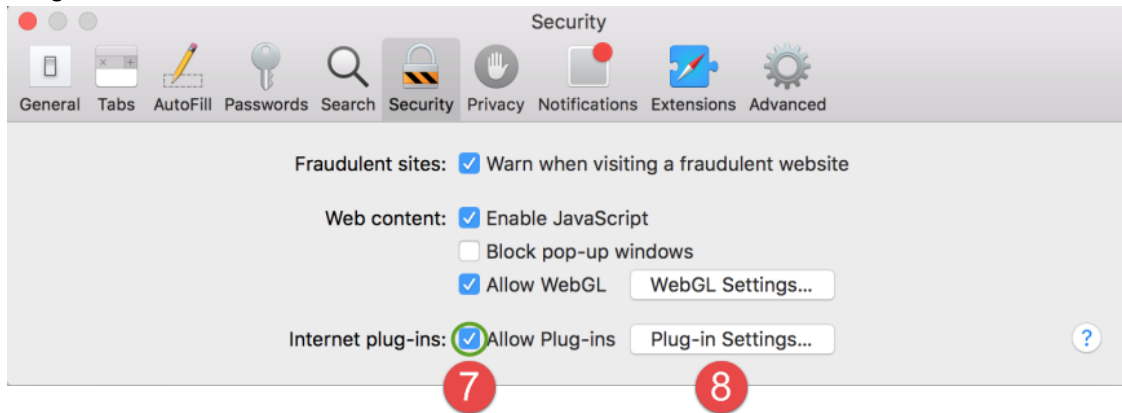
1. Open the Safari browser and make sure Safari is the active window.
2. Click on Safari in your browser menu, located at the top left of your screen to the right of the icon.
3. When the drop down appears, choose *Preferences* (⌘ + comma). Safari's General Preferences dialog should now be displayed, overlaying your browser window.
4. Click the *Security* tab lock icon.
5. In the *Web Content* section, there is an option labeled *Block pop-up windows*. Uncheck this box if it is checked to disable Safari's pop-up blocker as shown in the screenshot below.



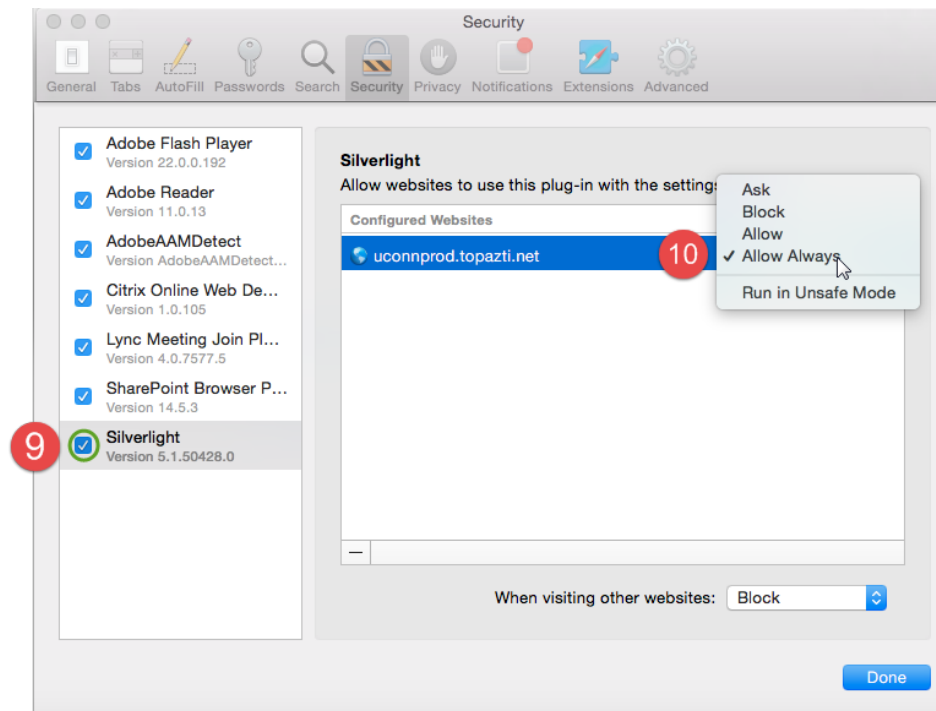
Enable Silverlight Plug-in and Always Allow UConnprod.topazti.net to Use Silverlight

In security, also make sure Internet plug-ins are allowed and that the Microsoft Silverlight plug-in is allowed for all sites or at minimum allowed for the uconnprod.topazti.net website.

6. Follow steps 1-4 above to open the Safari browser security preferences.
7. On the Security tab in the *Internet plug-ins* section, make sure there is a check mark to the left of “Allow Plug-ins.”

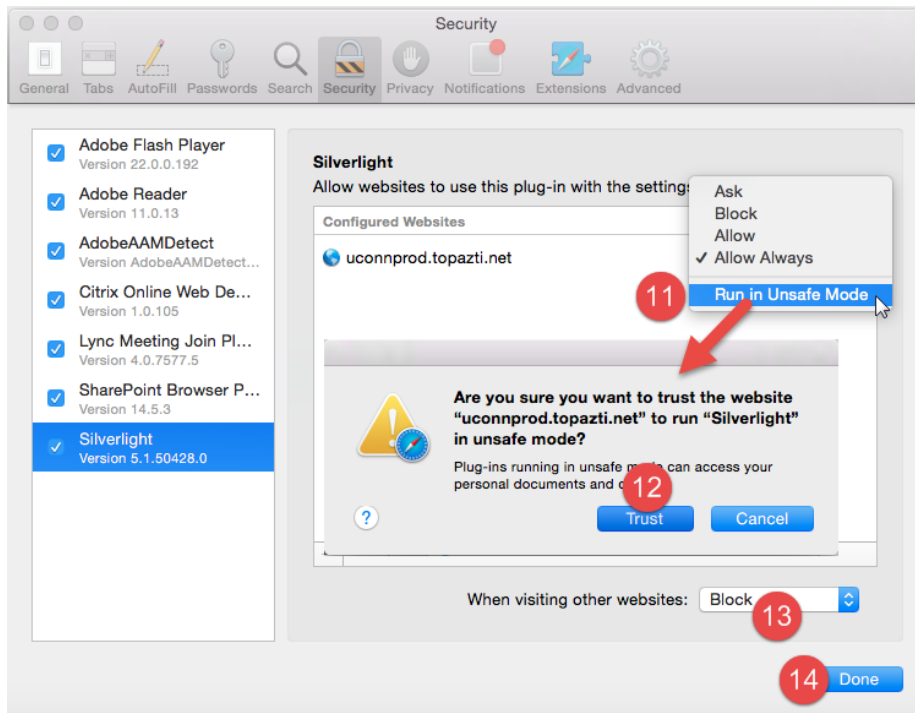


8. Click Plug-in Settings... button. A new dialog will overlay the security tab.
9. On the left hand side of the dialog, choose Silverlight. Make sure there is a check mark to the left of Silverlight to enable it (if your version of Safari has this option).



10. Change the uconnprod.topazti.net settings to “Allow Always” from the default “Allow”.
11. Change the uconnporod.topazti.net settings to “Run in Unsafe Mode”. This is used to enable copy/paste functions from other programs. It is only for the Topaz Elements website.
12. Click the Trust button when a new window appears with a question “Are you sure you want to trust the website “uconnprod.topazti.net” to run “Silverlight” in unsafe mode?”

- From the “When visiting other websites” menu, choose Block to stay safe on all other sites besides the Topaz Elements site.



- Click the Done button.
- Close the Security Preferences by clicking on the red circle with an x in the upper left of the dialog.

Copy and Pasting from Other Applications into Topaz Elements via Silverlight

In order to copy (Command + C) and paste (Command + V) from other programs into Topaz Elements, you must grant the Silverlight plug-in access to your clipboard if prompted. Make sure you have also configured Silverlight for the `uconnprod.topazti.net` website (Steps 11-14) above. Follow these steps to allow clipboard access (if prompted):

- Copy information to your clipboard by highlighting the text in the other program (e.g. Microsoft Word) and pressing Command + C on your keyboard.
- Within Safari browser, click on the question response in Topaz Elements where you want to paste text, press Command + V keys on your keyboard. A Microsoft Silverlight window appears with a question about allowing this web application to access your clipboard.
 - Check the box to the left of “Remember my answer” (otherwise with each paste, you must click Yes)
 - Click the Yes button to allow sharing between the clipboard and Silverlight / Topaz Elements.

